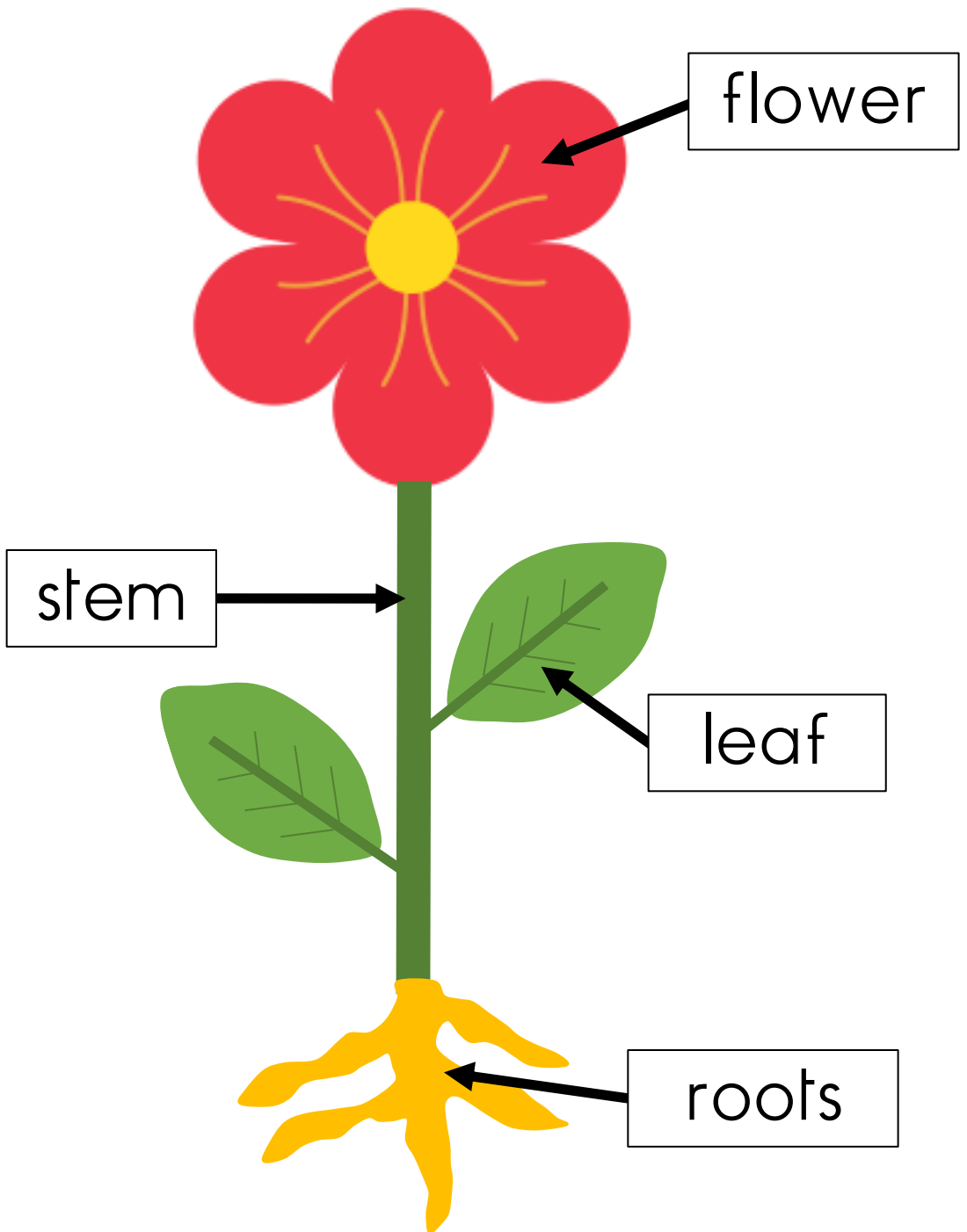


Parts of a plant

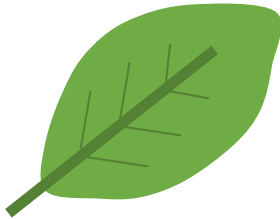


Parts of a plant



Flower

Flowers make the seeds.



Leaf

Leaves make the food for the plant.



Stem

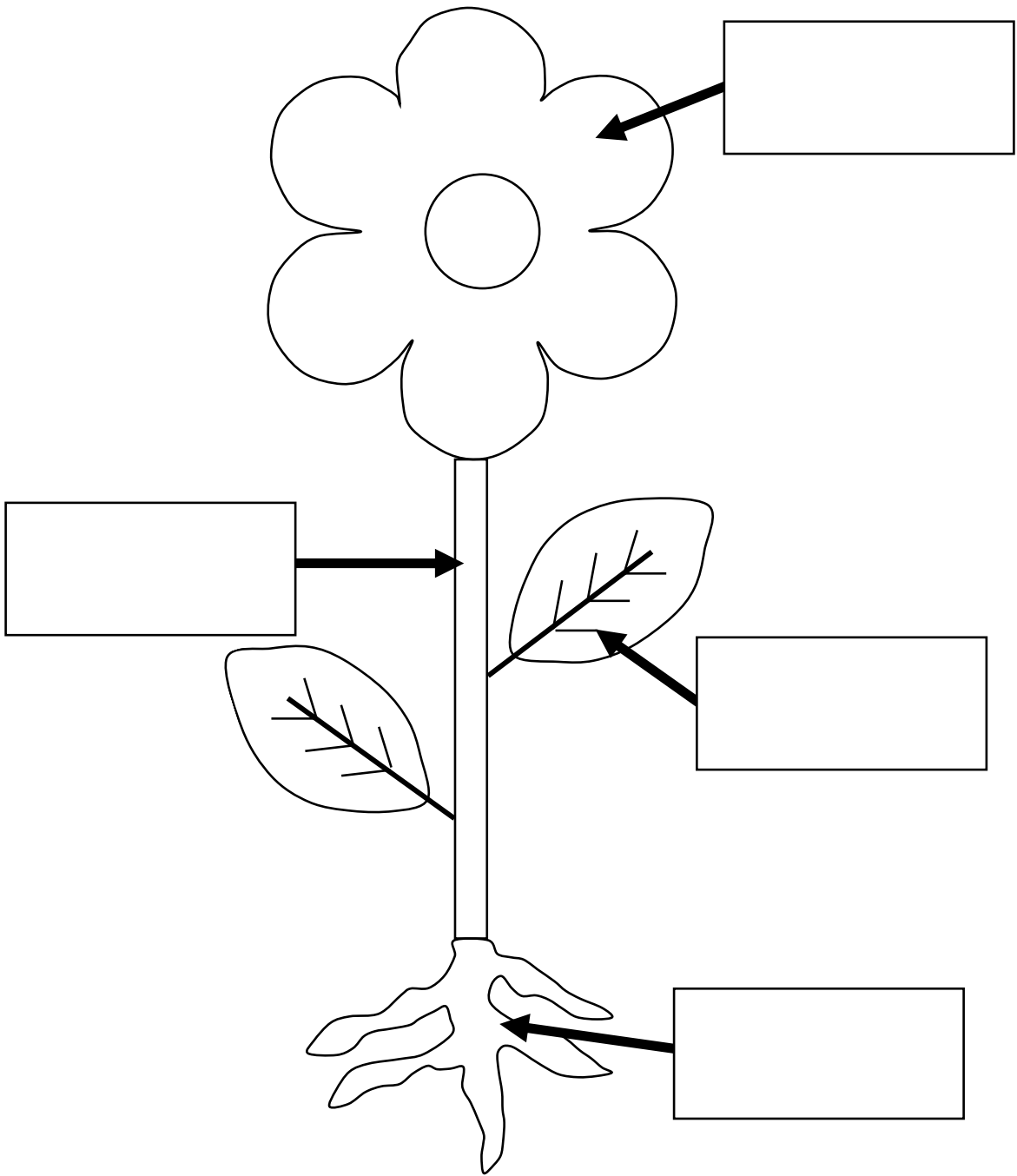
The stem carries the water and the food.



Roots

Roots take up the water from the soil.

Parts of a plant

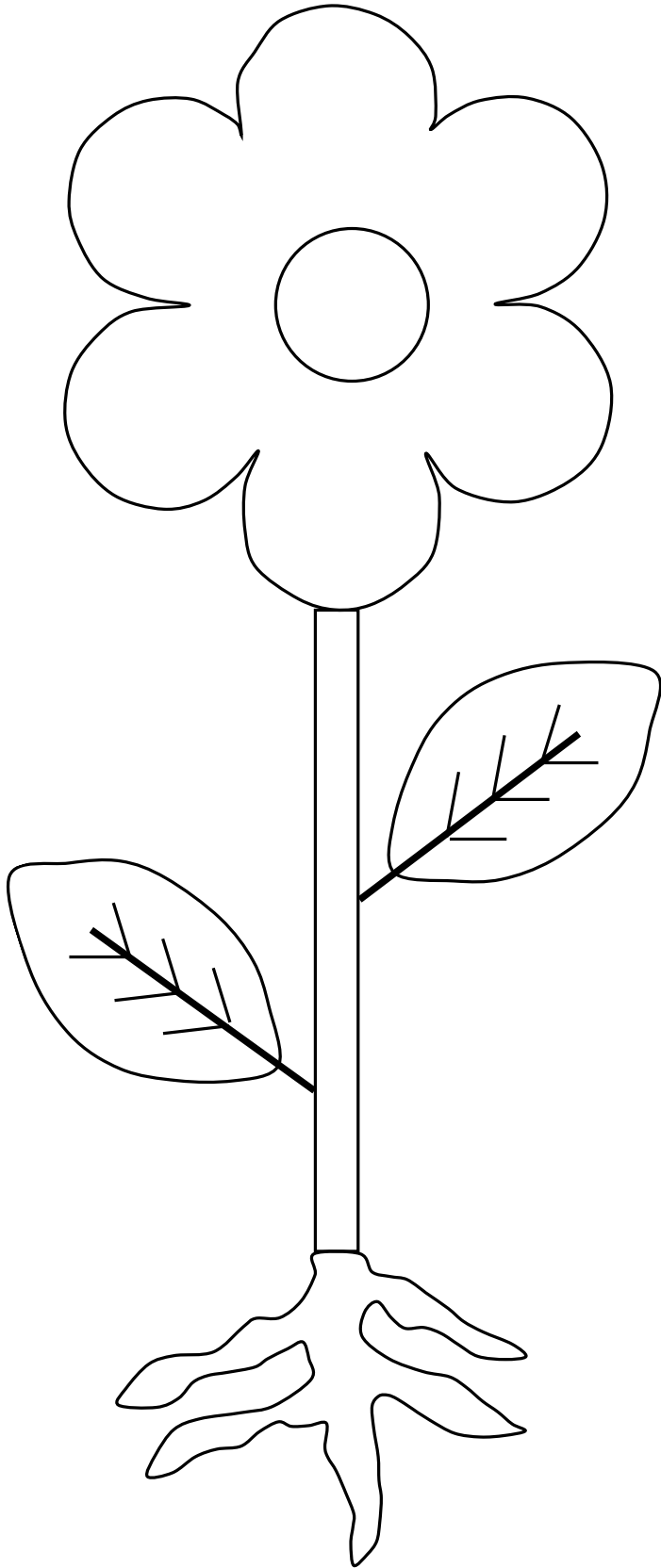


roots

leaf

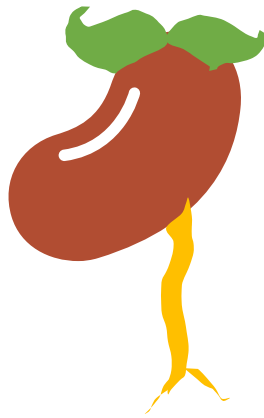
stem

flower

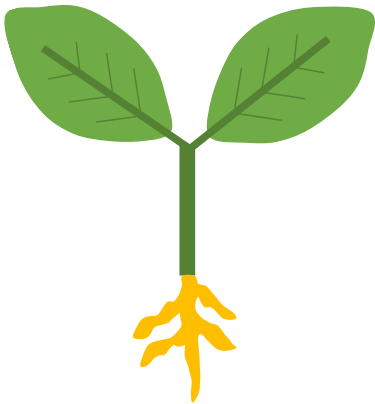




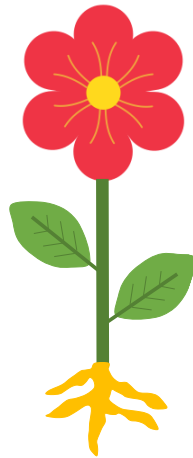
Seed



Sprout



Seedling

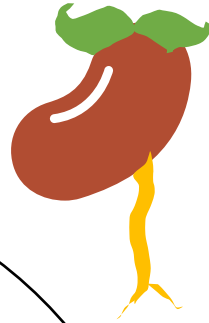


Plant

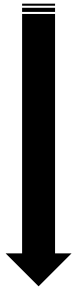
1



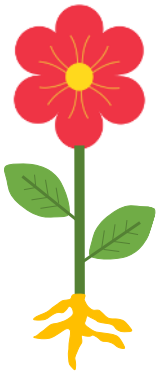
2



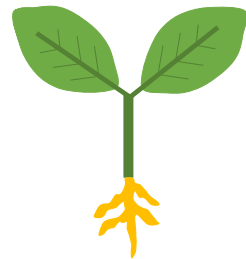
Plant life cycle

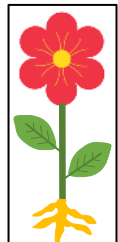
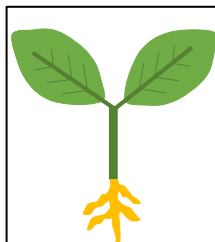
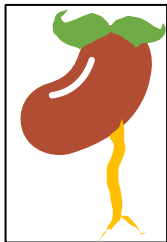
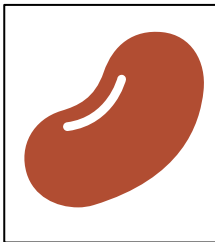
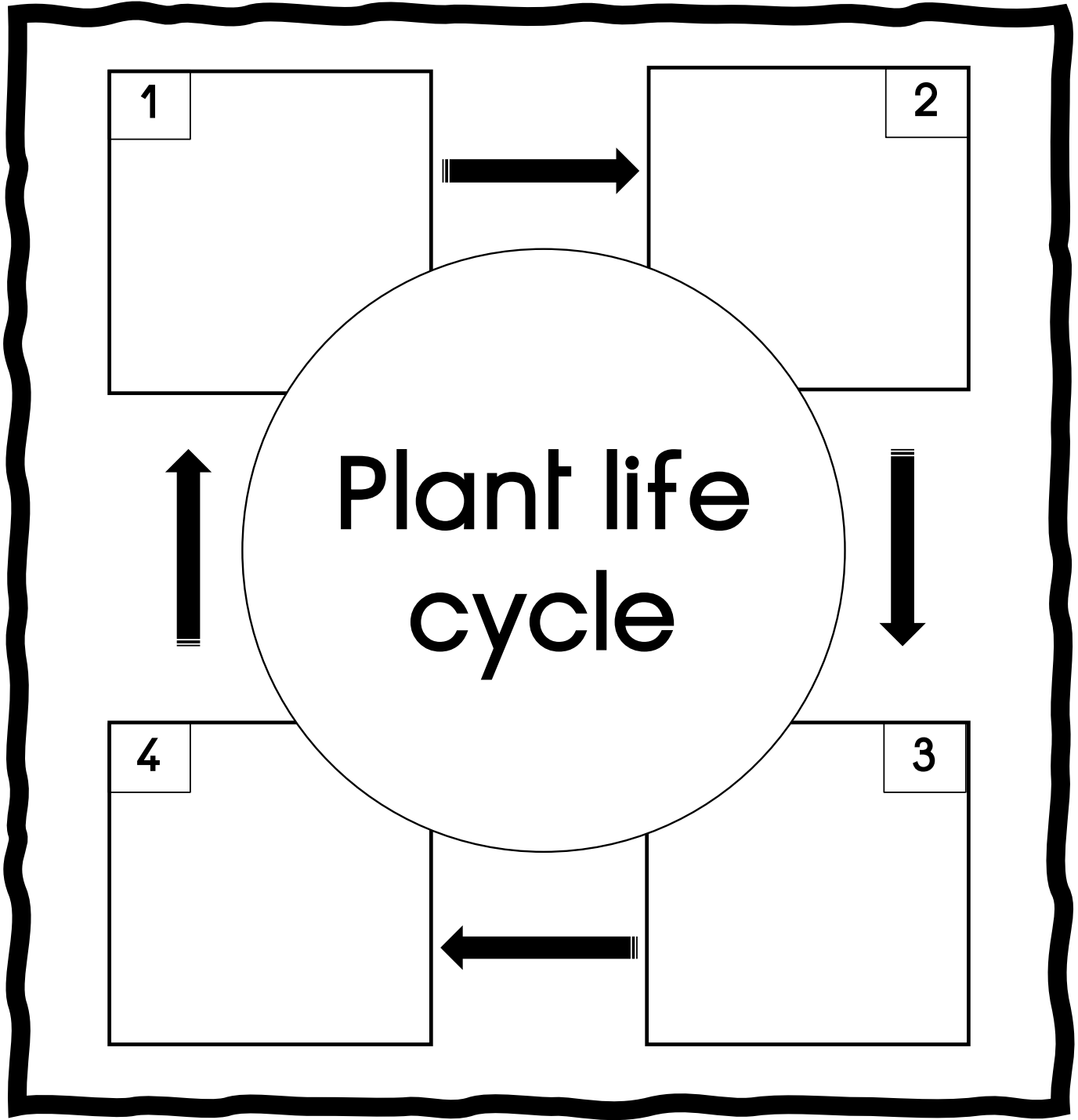


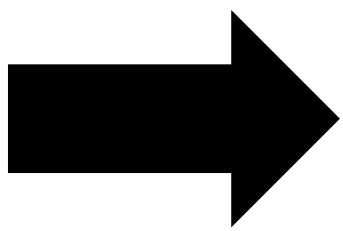
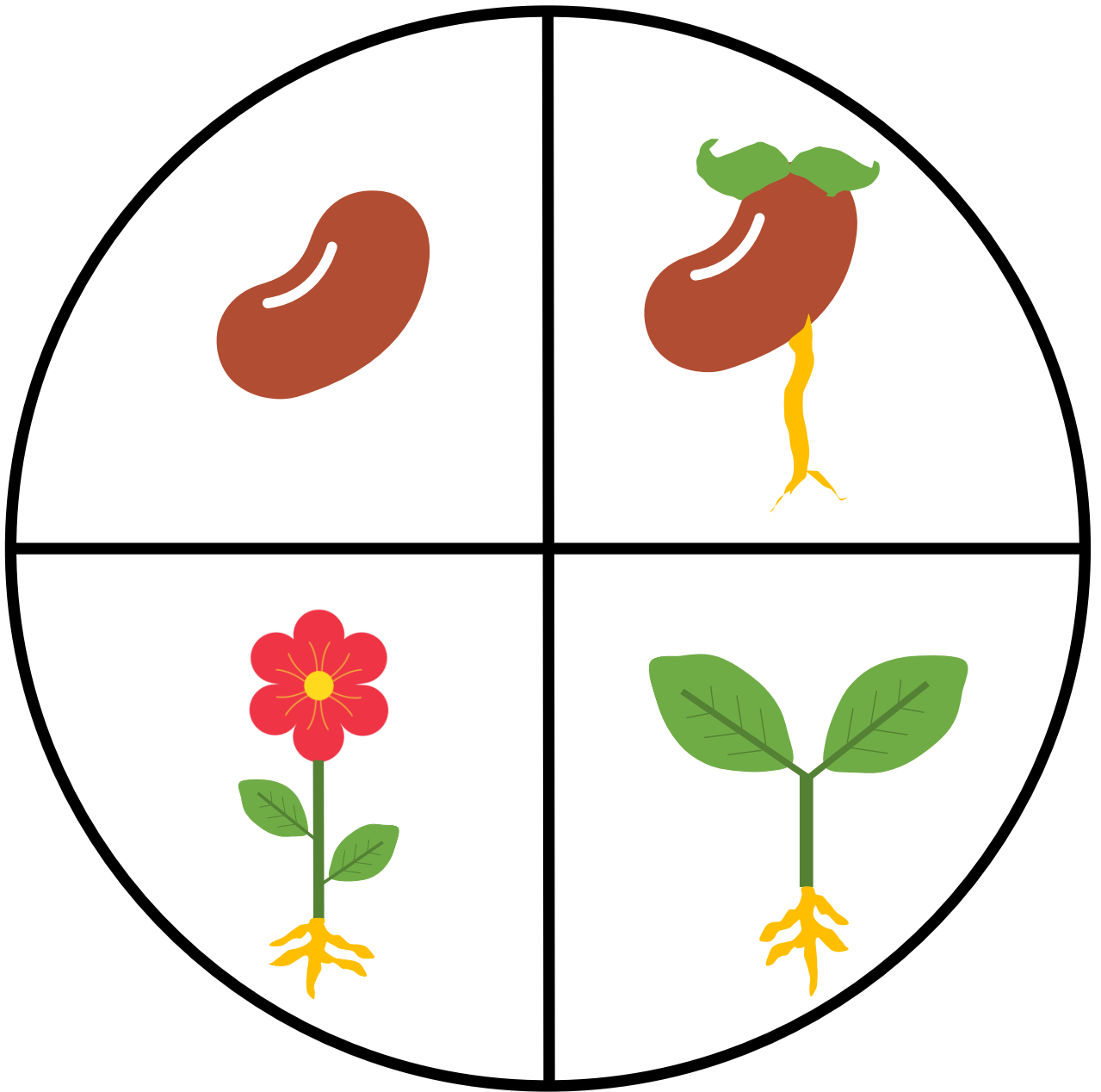
4

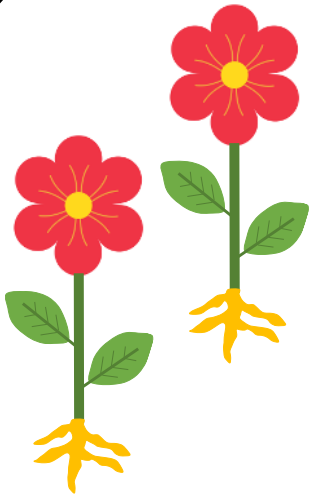


3









Plant life
cycle

